

PARTS CATALOG

T8.275, T8.300, T8.330,
T8.360, T8.390, T8.420
Tractor

Print No. 84583534
9/2013



NEW HOLLAND

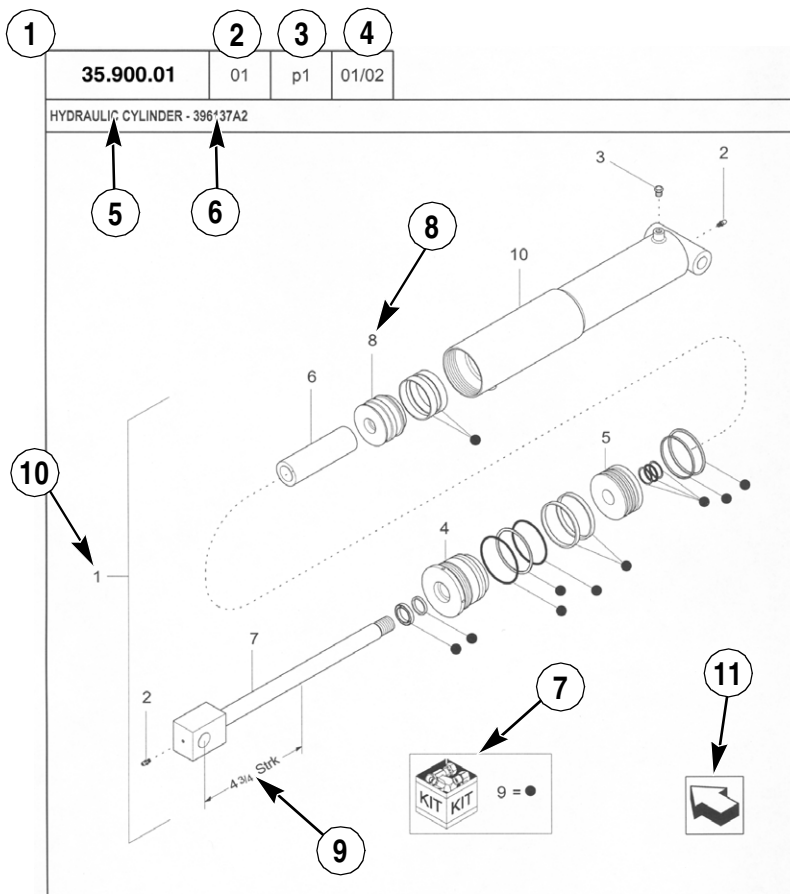
AGRICULTURE

GENERAL INFORMATION

1. Whenever the terms left and right are used, it should be understood to mean from a position facing in direction of travel.
2. Throughout this manual you may find common hardware not illustrated, but listed in the description column. The service part immediately preceding a hardware listing is the part using these particular items for mounting purposes. This hardware is not included with the service part or assembly when ordered as a replacement.
3. The illustrations show typical assemblies plus individual parts but in all cases may not show the exact shape or detail of parts required. However, the purpose for the illustrations is to identify parts performing like functions. Whenever possible illustrations are located at the beginning of each section or immediately adjacent to the applicable text.
4. CNH America LLC is continually striving to improve its products. We must, therefore, reserve the right to make improvements or changes when it becomes practical and possible to do so, without incurring any obligation to make changes or additions to the equipment sold previously.

CNH America LLC, Racine, WI 53404 U.S.A.

How to Use Your Parts Catalog



HYDRAULIC CYLINDER - 396137A2					
REF	FN	PART NUMBER	YR/SN	QTY	DESCRIPTION
1	1	396137A2	BTW 01/85 & 02/02	1	CYLINDER ASSY. 4-3/4 in strk, Inc 2-10
2		31-95	Before 01/85	2	FITTING
2		219-8	From 01/85	2	NIPPLE, LUBE Grease, 1/4 tpr x 17/32
3		{402475A2}		1	BREATHER
4		402474A1		1	CAP CYLINDER END
5		402468A1	BSN JJC0189200	1	PISTON ROD/GLAND
5		145221C3	ASN JJC0189200	1	PISTON
6		402471A1		1	SPACER
7		402473A1		1	ROD, PISTON
8		402469A1		1	PISTON ROD/GLAND
9		402476A1		1	PACKAGE, SEALS
10		NSS		1	NOT SERVICED SEPARAT CASE ASSEMBLY
(1) 08-20					
STANDARD			MODELS		

How to Use Your Parts Catalog

1. Figure Number
2. Sequence code within the Figure Number
3. Page number within the Sequence Code
4. Date of Printing (month / year)
5. Figure Description
6. General information regarding the figure
7. Parts supplied in repair kits per symbol reference
8. Figure call-out of the part number (REF)
9. Technical Specifications relating to the part indicated
10. Figure call-out includes bracketed items, the included items may also be listed in the additional description area
11. Orientation - Arrow indicates front of the machine
12. Footnote - Additional information relating to the part number. In this example, 08-20 equals another figure that this part is shown on.
13. Part Number
 - NSS = Non-serviced parts
 - Bracketed numbers = not available as service parts in this market
14. Not Available as service part in this market
15. YR/SN
 - Year
 - Before 01/85 = Part valid for production January 1985 and before
 - From 01/85 = Part valid for production from January 1985 and after
 - BTW 01/85 & 02/02 = Part valid for machines produced between January 1985 and February 2002.
 - Serial Number (P.I.N.)
 - BSN JJC0268800 = Part valid for serial number JJC0268800 and below
 - ASN JJC0268800 = Part valid for serial number JJC0268800 and above
 - BTW JJC0178000 & JJC0179000 = Part valid for serial numbers between JJC0178000 & JJC0179000
16. Total Quantity of the Part referred to in the page. The quantity can be replaced by the following indications:
 - AR = quantity as required
 - X = as required
17. Part Description
18. Additional description of the part to help confirm identification
19. Figure Notes
20. Model Number(s)

Explanation of Abbreviations

Abbreviation	Meaning
adj	adjustable
amp	ampere
AR	As required
ASN	Serial number and after / P.I.N. and after
barb	barb
blkhd	bulkhead
boss	boss
BSN	before serial number / before P.I.N
BTW	between
cc	cubic centimetre
chain	chain
cl	class
cp pt	cup point
CRS	Chrome Alloy Steel
CST	Carbon Steel
cu yd	cubic yard
deg	degree
dia	diameter
dr type	drive type
dry	dry
fc	face
fc sl	face seal
fem	female
fem PT	female pipe thread
fl	flare
ft	feet (or foot)
gal	gallon(s)
gr	grade
hd	head
hp	horsepower
ID	inside diameter

Abbreviation	Meaning
in	inch(es)
Inc.	includes
inv fl	inverted flare
K	kilo
kg	kilogram
L	litre
lb	pound(s)
lg	long
LH	left hand
LH thd	left hand thread
links	links
M	(prefix) metric thread size
m	metre
male	male
mm	millimetre
NF	National Fine
No.	number
NS	National Super Fine
OD	outside diameter
ohm	electrical unit of resistance
Or	O-ring
orifice	orifice
P	pitch
piece	piece
psi	pounds per square inch
PT	pipe thread
rd	round
rd holes	round holes
RH	right hand
RH thd	right hand thread
rpm	revolutions per minute

Explanation of Abbreviations

Abbreviation	Meaning
sl	self locking
slat	slat
spool	spool
sq	square
SST	Stainless Steel
st	self tapping
stem	stem
strk	stroke
sw	swivel
T	teeth
Teflon	Teflon
thin	thin
thk	thick
tpr	taper

Abbreviation	Meaning
tube	tube
type	type
V	volt(s)
W	watt(s)
way	way
wide	wide
X	as required
yd	yard

Dimensions

Metric and U.S. hardware dimensions do not show the numeric designations of standard coarse threads. A number following a semi colon (;) is the class or grade of hardware. A comma (,) represents the decimal point (.) used in U.S. dimensions.



TABLE OF CONTENTS

88.010.01		DIA KIT, AUXILARY FUEL FILTER
88.031.01		DIA KIT, FRONT HITCH HYDRAULIC PLUMBING
88.031.02		DIA KIT, FRONT PTO COMPLETING-NA
88.031.03		DIA KIT, FRONT PTO COMPLETING-EUR
88.031.04		DIA KIT, HYDRAULIC FRONT AXLE SCISSOR SUSP
88.031.05		DIA KIT, HYDRAULIC FRONT AXLE SADDLE SUSP
88.031.06		DIA KIT, FRONT HITCH ONLY, STANDARD AXLE
88.031.07		DIA KIT, FRONT HITCH ONLY, SCISSOR SUSPENDED AXLE
88.031.08		DIA KIT, FRONT HITCH ONLY, SADDLE SUSPENDED AXLE
88.033.01	01	DIA KIT, NON-EEC AIR TRAILER BRAKE
88.033.01	02	DIA KIT, NON-EEC AIR TRAILER BRAKE
88.033.01	03	DIA KIT, NON-EEC AIR TRAILER BRAKE
88.033.01	04	DIA KIT, NON-EEC AIR TRAILER BRAKE
88.033.02		DIA KIT, EEC HYDRAULIC TRAILER BRAKE
88.033.03		DIA KIT, HYDRAULIC TRAILER BRAKE, ITALY
88.035.01		DIA KIT, HYDRAULIC TOP LINK - BALL
88.035.01	01	DIA KIT, HITCH READY COMPLETION, CAT III
88.035.01	02	DIA KIT, HITCH READY COMPLETION, CAT III
88.035.02		DIA KIT, HYDRAULIC TOP LINK - BALL
88.035.02	01	DIA KIT, HITCH READY COMPLETION, CAT IV
88.035.02	02	DIA KIT, HITCH READY COMPLETION, CAT IV
88.035.03		DIA KIT, HYDRAULIC 5TH REMOTE
88.035.03		DIA KIT, HYDRAULIC LIFT LINK
88.035.04		DIA KIT, HYDRAULIC MOTOR RETURN WITH CASE DRAIN
88.035.04		DIA KIT, HYDRAULIC TOP LINK - CLAW
88.035.05		DIA KIT, HYDRAULIC POWER BEYOND, MOTOR RETURN VALVE
88.035.06		DIA KIT, MEGA-TWIN FLOW
88.035.07		DIA KIT, HYDRAULIC 6TH REMOTE
88.037.01		DIA KIT, FRONT WEIGHTS, 12 X 40KG
88.037.02		DIA KIT, FRONT WEIGHTS, 22 X 40KG
88.037.03		DIA KIT, FRONT WEIGHTS, 10 X 100KG
88.037.04		DIA KIT, FRONT WEIGHTS, 16 X 100KG
88.037.05		DIA KIT, REAR WHEEL WEIGHTS, I PAIR 200LB/91KG
88.037.06		DIA KIT, REAR WHEEL WEIGHTS, I PAIR 500LB/227KG
88.037.07		DIA KIT, REARWHEEL WEIGHT, 2 X 1000 LB
88.039.01		DIA KIT, FRONT 3PT WEIGHT BRACKET CARRIER

TABLE OF CONTENTS

88.055.01		DIA KIT, JOYSTICK
88.055.02		DIA KIT, ISO BUS 11783
88.055.03		DIA KIT, HID
88.055.04		DIA KIT, LEFT HAND BEACON LIGHT
88.055.05		DIA KIT, DUAL BEACON LIGHTS
88.055.06		DIA KIT, REAR HID LIGHT
88.055.07		DIA KIT, BUSINESS BAND RADIO ANTENNA CABLE
88.055.07		DIA KIT, TRACTOR, BUSINESS BAND RADIO ANTENNA CABLE
88.055.08		DIA KIT, AM/FM/WB RADIO
88.055.08		DIA KIT, TRACTOR, RADIO AM/FM/WB
88.055.09		DIA KIT, AM/FM/WB/CASS RADIO
88.055.09		DIA KIT, TRACTOR, RADIO AM/FM/WB/CD/CASS
88.055.10		DIA KIT, AM/FM/WB/CD/CASS RADIO
88.055.11		DIA KIT, FRONT HITCH HEADLAMPS, RIGHT HAND DIP
88.055.12		DIA KIT, FRONT HITCH HEADLAMPS, LEFT HAND DIP
88.055.13		DIA KIT, IMPLEMENTCONNECTOR
88.090.01		DIA KIT, FRONT FENDER, NARROW - DANA 10/12HD BOLT
88.090.02		DIA KIT, FRONT FENDER, NARROW - DANA CLASS 5
88.090.03		DIA KIT, FRONT FENDER, NARROW - DANA CLASS 4, 4.5
88.090.04		DIA KIT, FRONT FENDER, WIDE - DANA 10/12 HD BOLT
88.090.05		DIA KIT, FRONT FENDER, WIDE - DANA CLASS 5
88.090.06		DIA KIT, FRONT FENDER, WIDE - DANA CLASS 4, 4.5
88.090.07		DIA KIT, MANUAL WIDE ADJUSTABLE MIRRORS
88.090.08		DIA KIT, REMOTE WIDE ADJUSTABLE MIRROR
88.090.09		DIA KIT, OVERWIDTH WARNING
88.090.10		DIA KIT, OVERWIDTH WARNING, ITALY
88.090.12		KIT HIGH DEBRIS INTAKE GRILLE
88.090.13		DIA KIT, FRED II RH BAR INSTALL
88.100.AH		TOOL BOX & MOUNTING
33.110.AT	01	BRAKES, CONTROL VALVE
33.110.AT	02	BRAKES, CONTROL VALVE - CVT
33.110.AT	03	PNEUMATIC TRAILER BRAKE HAND CONTROL VALVE
33.110.BJ	01	PARKING BRAKE, HYDRAULIC SYSTEM
33.202.AR	01	BRAKE ASSY., DIFFERENTIAL
33.202.AR	02	BRAKE ASSEMBLY DIFFERENTIAL - HD
33.202.BN		BRAKES, PEDAL BRAKE

TABLE OF CONTENTS

33.220.AC	03	TRAILER BRAKE VALVE, HYDRAULIC SYSTEM - CVT
33.220.AC	04	MASTER BRAKE WITH HYDRAULIC TRAILER BRAKE - CVT
33.220.AC	05	MASTER BRAKE WITH PNEUMATIC TRAILER BRAKE - CVT
33.220.AM	01	TRAILER BRAKE VALVE
33.224.AC		TRAILER BRAKE RESERVOIRS - POWERSHIFT
33.224.AF	01	PNEUMATIC TRAILER BRAKES STD - CVT
33.224.AF	02	PNEUMATIC TRAILER BRAKES - CVT
33.224.AH		TRAILER BRAKE AIR COMPRESSOR SINGLE TURBO
33.224.BA		PNEUMATIC TRAILER BRAKE DUAL LINE
33.224.BC	01	POWERSHIFT - TRAILER BRAKE PLUMBING, AND VALVE & FILTER
33.224.BC	02	POWERSHIFT - TRAILER BRAKES VALVE AND FILTER ASSY
33.224.BC	03	2-LINE PNEUMATIC TRAILER BRAKE CONTROL VALVE
50.100.AQ		AIR CONDITIONING, AIR FILTER
50.104.AO		AIR CONDITIONING, DUCTS
50.200.AA		AIR CONDITIONING, COMPRESSOR
50.200.AB	01	AIR CONDITIONING, CONDENSER - PST
50.200.AB	02	AIR CONDITIONER, CONDENSER - CVT
50.200.CB	01	AIR CONDITIONING, CLIMATE CONTROL WITH AUTO TEMPERATURE
50.200.CB	02	AIR CONDITIONING, CLIMATE CONTROL WITH AUTO TEMPERATURE
55.015.AB	01	HARNESS, ENGINE, ASSY
55.015.AB	02	HARNESS, ENGINE
55.024.AE		TRANSMISSION, ELECTRONIC CONTROL UNIT
55.100.AC	01	HARNESS CHASSIS ASSY, POWERSHIFT TRANSMISSION
55.100.AC	02	HARNESS CHASSIS - POWERSHIFT TRANSMISSION
55.100.AC	03	HARNESS CHASSIS - POWERSHIFT TRANSMISSION
55.100.AC	04	HARNESS CHASSIS - POWERSHIFT TRANSMISSION
55.100.AC	05	CVT - CHASSIS HARNESS ASSY
55.100.AC	06	CVT - CHASSIS HARNESS
55.100.AC	07	CVT - CHASSIS HARNESS
55.100.DO	01	ELECTRICAL COMPONENT MOUNTING
55.100.DO	02	ELECTRICAL COMPONENT MOUNTING, FUSES
55.100.DO	03	IMPLEMENT CONNECTORS & MOUNTING
55.100.DO	04	FUSE BOX, POWER DISTRIBUTION
55.100.DP	01	HARNESS, ARMREST WITH MOTOR
55.100.DP	02	HARNESS, ARMREST WITHOUT MOTOR
55.100.DP	03	HARNESS, ARMREST ELECTRIC ADJUST

TABLE OF CONTENTS

55.100.DP	04	HARNESS, TERMINATOR
55.100.DP	05	HARNESS, FRONT PTO
55.100.DP	06	HARNESS, AUXILIARY
55.100.DP	07	HARNESS, PARK BRAKE SWITCH
55.130.AR		HARNESS, FRONT HITCH
55.130.AS		HITCH, POSITION SENSOR
55.201.AH		CONTROLS, FRONT CONSOLE
55.202.AA		GRID HEATER CABLES
55.301.AA		ALTERNATOR
55.301.AG	02	BATTERY - TRAY & CABLES - FOR RUSSIAN KAMAZ UNITS
55.302.AG	01	BATTERY, BATTERY BOX & CABLES
55.302.AI		BATTERY DISCONNECT SWITCH
55.404.AC		LAMP, BEACON - SINGLE/ DUAL
55.404.AQ		HEADLAMPS
55.404.BS	01	WORK LAMPS, ROOF
55.404.BS	02	WORK LAMPS, ROOF & REAR FENDER
55.404.BS	03	LAMPS, REAR FENDER AND REMOTE HITCH SWITCH
55.404.BS	04	A-POST, WORK LIGHTS, RIGHT HAND
55.404.BS	06	C-POST, ROOF LIGHTS
55.404.CL		SIGNAL LAMPS, ROOF
55.404.CY	01	LAMPS, WIDE TRANSPORT, ADJUSTABLE
55.404.CY	02	LAMPS, WIDE TRANSPORT, FIXED
55.408.AG		HORN
55.408.CA		A-POST COVER, INSTRUMENT CLUSTER
55.510.AH		HARNESS, ROOF
55.510.BL		24V CONVERTER & MOUNT
55.510.BM		POWER OUTLETS, CAB
55.511.AA		HARNESS, EGRESS LIGHTING
55.511.AB		HARNESS, HEADLIGHTS
55.511.AM	01	HARNESS, BEACON LIGHT ADAPTER
55.511.AM	02	HARNESS, DUAL STROBE JUMPER
55.512.AA		RADIOS, SPEAKERS, AND ANTENNAS
55.512.BG		CONTROLS, RIGHT FENDER CONSOLE
55.512.CS	01	ARMREST CONTROL UNIT, ELECTRONIC CONTROLS
55.512.CS	02	ARMREST CONTROL UNIT, ELECTRONIC CONTROLS
55.512.CS	03	ARMREST CONTROLS

TABLE OF CONTENTS

55.512.CS	04	ARMREST CONTROL UNIT
55.512.CS	05	ARMREST, CONTROL UNIT, SLIDE MECHANISM
55.512.CS	06	ELECTRIC ARMREST, CONTROL, 4WD
55.518.AN		WINDOW WIPER, RIGHT SIDE
55.518.AT		WINDSHIELD WASHER
55.518.AW		WINDSHIELD WIPER ASSY, FRONT & REAR
55.610.AA		PEDAL, INCHING
55.640.BH	01	ISO BUS COMPONENTS
55.680.AA	01	HARNESS, AUTOGUIDANCE OUTSIDE
55.680.AA	02	HARNESS, AUTOGUIDANCE INSIDE
55.680.AN		AUTOGUIDANCE CONTROL MODULE & MOUNTING
55.680.AO		RADAR MOUNTING
55.785.AF		LARGE COLOR DISPLAY MOUNTING
55.911.AA		GPS RECEIVER & MOUNTING
55.911.AC		HARNESS, GPS ANTENNA
10.001.AK		ENGINE MOUNTING PARTS
10.102.AW		ENGINE OIL DRAIN
10.110.AD	01	DAMPER, SHAFT & SHIELD, PST & CVT - T8.275, T8.300, T8.330
10.110.AD	02	DAMPER, SHAFT & SHIELD, POWERSHIFT - T8.360, T8.390
10.110.AD	03	DAMPER, SHAFT & SHIELD, CVT - T8.275, T8.300, T8.330
10.110.AD	04	DAMPER, SHAFT & SHIELD, CVT - T8.360, T8.390, T8.420
10.202.AB		AIR CLEANER ASSY
10.202.BD	01	AIR INTAKE
10.202.BD	02	AIR INTAKE
10.202.BD	02	AIR INTAKE - T8.420
10.202.BD	03	DIRTY AIR DUCT ASSY
10.202.BD	04	AIR CLEANER ASSY
10.206.AF	01	FUEL FILTER/WATER SEPARATOR, FUEL LINES
10.206.AF	02	FUEL FILTER/WATER SEPARATOR
10.206.AG		FUEL FILTER WITH WIF SENSOR
10.206.AN		ENGINE BLOCK & TRANSMISSION HEATER
10.210.AO		FUEL PUMP/FILTER PLUMBING
10.216.AI	01	FUEL TANK & ASSOCIATED PARTS, POWERSHIFT, T4
10.216.AI	02	FUEL TANK & ASSOCIATED PARTS, POWERSHIFT, T2
10.216.AI	03	FUEL TANK SUPPORTS, POWERSHIFT
10.216.AI	04	FUEL TANK SUPPORTS, POWERSHIFT

TABLE OF CONTENTS

10.216.AI	05	FUEL TANK SUPPORTS, CVT
10.216.AI	06	FUEL TANK & ASSOCIATED PARTS, T4, CVT
10.216.AI	07	FUEL TANK & ASSOCIATED PARTS, T2, CVT
10.216.BA	01	FUEL LINE WITHOUT FUEL SEPARTATOR FILTER
10.220.AA		FOOT THROTTLE
10.254.AI	01	EXHAUST SYSTEM, T4
10.254.AI	02	EXHAUST SYSTEM, T4
10.254.AI	03	EXHAUST SYSTEM, T2
10.254.AZ		EXHAUST BRAKE PEDAL & SWITCH
10.310.AA		AFTERCOOLER
10.400.BE	01	RADIATOR - 5 ROW
10.400.BE	02	RADIATOR MOUNTING PARTS AND PLUMBING - 5 ROW
10.400.BE	03	RADIATOR MOUNTING PARTS AND PLUMBING - 5 ROW
10.414.AC	01	VISCOUS FAN DRIVE, ELECTRONIC
10.414.AC	02	SUPPORT ASSY, VISCOUS FAN DRIVE
10.500.AA		SCR TANK ASSY
10.500.AD	01	SCR COMPONENTS
23.101.AF	01	MFD OUTPUT, CL 5 - CVT
23.101.AF	02	MFD OUTPUT, CL 5 - PST
23.101.AF	03	MFD OUTPUT, CL 4.5 & CL 4.75 - PST
23.101.AF	04	MFD OUTPUT, CL 4.75 - CVT
39.100.AY	01	FRONT FRAME, STANDARD & SUSPENDED AXLE
39.100.AY	02	FRONT FRAME, CLASS V, SUSPENDED AXLE-
39.140.AF		FRONT WEIGHTS
25.100.AD	01	FRONT AXLE ASSY, SUSPENDED, CL 4.75 - AXLE SERIAL NUMBER
25.100.AD	02	FRONT AXLE, ASSY WITHOUT SUSPENSION CL4.75 - AXLE SERIAL
25.100.AD	03	FRONT AXLE ASSY, CL5 - AXLE SERIAL NUMBER AJB0500000 AND
25.100.AD	04	DANA AXLE - MFD AXLE HOUSING ASSEMBLY, STANDARD WITH 12
25.100.AD	05	DANA AXLE - MFD AXLE HOUSING ASSEMBLY, STANDARD 12 BOLT,
25.100.AD	06	DANA AXLE - FRONT AXLE PLANETARIES AND HUB - MFD, WITH 12
25.100.AD	07	DANA AXLE - FRONT AXLE ASSEMBLY, CLASS 4.5, STANDARD MFD-
25.100.AD	08	DANA AXLE - FRONT AXLE ASSEMBLY, CLASS V, STANDARD AND
25.100.AD	09	DANA AXLE - FRONT AXLE ASSEMBLY, CLASS V, STANDARD AND
25.100.AD	10	DANA AXLE - MFD AXLE HOUSING ASSEMBLY, SUSPENDED WITH 12
25.100.AD	11	DANA AXLE - MFD AXLE HOUSING ASSEMBLY, SUSPENDED WITH 12
25.100.BB	01	FRONT AXLE, SADDLE, SUSPENSION, CL4.75 - AXLE SERIAL

TABLE OF CONTENTS

25.100.BB	02	FRONT AXLE SADDLE SUSPENSION CL 5 - AXLE SERIAL NUMBER
25.100.BB	03	DANA AXLE - FRONT AXLE, MOUNTING, MFD-
25.100.BB	04	DANA AXLE - FRONT AXLE, MOUNTING, SCISSOR SUSPENDED MFD-
25.100.BB	05	DANA AXLE - FRONT AXLE SUSPENSION -
25.100.BB	06	DANA AXLE - FRONT AXLE SUSPENSION -
25.100.BB	07	DANA AXLE - FRONT AXLE, CLASS V, SUSPENDED MFD-
25.100.BB	08	DANA AXLE - FRONT AXLE SUSPENSION, CLASS V -
25.102.AB	01	PINION ASSY WITH DIFFERENTIAL CL 4.75 - AXLE SERIAL NUMBER
25.102.AB	02	PINION ASSY, WITH DIFFERENTIAL, CL 5 - AXLE SERIAL NUMBER
25.102.AD	01	DIFFERENTIAL ASSY, FRONT AXLE CL 4.75 - AXLE SERIAL NUMBER
25.102.AD	02	DIFFERENTIAL ASSY, FRONT AXLE CL 5 - AXLE SERIAL NUMBER
25.102.AD	03	DANA AXLE - CARRIER & DIFFERENTIAL, CLASS 4.5, STANDARD
25.102.AD	04	DANA AXLE - CARRIER & DIFFERENTIAL, CLASS 4.5, STANDARD
25.102.AD	05	DANA AXLE - CARRIER & DIFFERENTIAL, CLASS 4.5, STANDARD
25.102.AD	06	DANA AXLE - CARRIER & DIFFERENTIAL, CLASS V, STANDARD AND
25.102.AD	07	DANA AXLE - CARRIER & DIFFERENTIAL, MFD, 12 BOLT HUB, WITH
25.102.AD	08	DANA AXLE - CARRIER & DIFFERENTIAL, MFD, 12 BOLT HUB, WITH
25.102.AP	01	CARRIER, ASSY, PLANETARY 3-PIN - CL 4.75 - AXLE SERIAL NUMBER
25.102.AP	02	CARRIER PLANETARY ASSY, CL 5 - AXLE SERIAL NUMBER
25.102.AP	03	DANA AXLE - FRONT AXLE PLANETARIES AND HUB, MFD, 12 BOLT
25.102.AP	04	DANA AXLE - FRONT AXLE PLANETARIES AND HUB, MFD, 12 BOLT
25.102.AP	05	DANA AXLE - FRONT AXLE PLANETARIES AND HUB, CLASS 4.5,
25.102.AP	06	DANA AXLE - FRONT AXLE PLANETARIES AND HUB, CLASS V,
25.108.AA	01	FRONT AXLE, DRIVE SHAFTS & SHIELDS - CL 4.5, CL 4.75, CL 5 - PST
25.108.AG	01	KNUCKLE ASSY, STEERING, LH & RH, CL 4.75 - AXLE SERIAL
25.108.AG	02	KNUCKLE ASSY, STEERING, LH & RH, CL 5 - AXLE SERIAL NUMBER
25.108.AG	03	DANA AXLE - FRONT AXLE KING PIN WITH AUTOGUIDANCE-
25.108.AN	01	WHEEL ASSY, LH & RH, CL 4.75 - AXLE SERIAL NUMBER AJB0500000
25.108.AN	02	WHEEL ASSY LH & RH, CL 5 - AXLE SERIAL NUMBER AJB0500000
25.122.AB	01	SUSPENSION CYLINDER,ASSY, FRONT AXLE, CL 4.75
25.122.AB	02	SUSPENSION CYLINDER ASSY, FRONT AXLE, CL 5
25.122.AL	06	VALVE ASSEMBLY, SADDLE SUSPENSION, 235 - 315 & T8.275 - T8.360
37.000.00		PICTORIAL INDEX - REAR HITCH, FRONT HITCH, AND DRAWBARS
37.100.AA	01	DRAWBAR & HAMMERSTRAP STANDARD
37.100.AA	02	DRAWBAR & HAMMERSTRAP, HIGH CAPACITY, CAT III
37.100.AA	03	DRAWBAR & HAMMERSTRAP, HIGH CAPACITY, CAT IV

TABLE OF CONTENTS

37.100.AA	04	DRAWBAR ASSY CAT 4 FOR HD AXLE
37.106.AA		TRAILER HITCH, MANUAL PIN, ITALY ONLY (CBM)
37.110.AI	01	HITCH, LIFT LINK ASSEMBLY
37.120.AA	01	HITCH, TOP LINK BRACKET
37.120.AF	01	HITCH, STABILIZER & BRACKET
37.120.AW	01	QUICK-HITCH COUPLER, CONVERTIBLE, CATAGORY, III/III-N
37.120.AW	02	QUICK-HITCH COUPLER, CONVERTIBLE, CATEGORY III/IV-N
37.120.AW	03	HITCH, DRAFT CONTROL PINS - T8.275,T8.300
37.120.AW	04	HITCH - DRAFT CONTROL PINS - T8.330,T8.360,T8.390
37.120.AW	05	HITCH, DRAFT CONTROL PINS - HEAVY DUTY REAR AXLE - T8.390,
37.120.AZ	01	HITCH, SWAY LIMITER
37.120.AZ	02	HITCH, SWAY LIMITER
37.162.AF	01	FRONT HITCH, 3 POINT HITCH ASSY, 6T
37.162.AF	02	FRONT HITCH, 3 POINT HITCH ASSY, 6T
37.162.AF	03	FRONT HITCH, 3 POINT HITCH ASSY, 6T
37.162.AF	04	FRONT HITCH, 3 POINT HITCH ASSY, 6T
37.166.AE		LIFT HOOK ASSY
35.000.AA	01	POWERSHIFT - HYDRAULIC SYSTEM, PISTON PUMP & FILTER,
35.000.AA	02	POWERSHIFT - HYDRAULIC SYSTEM, PISTON PUMP & FILTER, TWIN
35.000.AA	03	POWERSHIFT - HYDRAULIC SYSTEM, PISTON PUMP & FILTER, TWIN
35.000.AA	04	POWERSHIFT - HYDRAULIC SYSTEM, REGULATED PRESSURE
35.000.AA	05	POWERSHIFT - HYDRAULIC SYSTEM, REGULATED PRESSURE
35.000.AA	06	HYDRAULIC SYSTEM, COUPLER SPILLAGE
35.000.AA	07	CVT - HYDRAULIC LUBE
35.000.AA	08	CVT - STD/HIGH FLOW PUMP HYDRAULIC SYSTEM
35.000.AA	09	CVT - TWIN FLOW HYDRAULIC SYSTEM
35.000.AA	10	CVT - TWIN/MEGA FLOW HYDRAULIC SYSTEM
35.105.AA	01	POWERSHIFT - HYDRAULIC SYSTEM, CHARGE PUMP
35.105.AA	02	CVT - CHARGE PUMP
35.114.AF	01	VALVE ASSY, HITCH
35.114.AF	02	VALVE ASSY, LIFT LINK
35.116.AH	01	CYLINDER ASSY, HITCH (95 MM)
35.116.AH	02	CYLINDER ASSY, HITCH (105 MM)
35.116.AH	03	CYLINDER ASSY, HITCH (115MM)
35.116.AL	01	REAR HITCH - LIFT CYLINDER PLUMBING 95MM
35.116.AL	02	REAR HITCH - LIFT CYLINDER PLUMBING 105MM

TABLE OF CONTENTS

35.116.AL	03	REAR HITCH - LIFT CYLINDER PLUMBING 115MM
35.124.AE	01	REAR HITCH - LIFT LINK/TURNBUCKLE PLUMBING
35.124.AE	02	HYDRAULIC TOP LINK ASSEMBLY- BALL & CLAW
35.124.AJ	01	REAR HITCH - LOWER LIFT LINKS
35.124.AJ	02	REAR HITCH - LOWER LIFT LINKS, CATERGORY III
35.124.AJ	03	HITCH, LOWER LIFT LINKS
35.124.AJ	04	HITCH LINKAGE ASSY, TURNBUCKLE LIFT - RH
35.124.AJ	05	HITCH LINKAGE ASSY, TURNBUCKLE LIFT - LH
35.160.AK	02	FPTO SADDLE LOCKOUT VALVE/ACCUMULATORS
35.204.AX	01	HYDRAULIC POWER BEYOND, MOTOR RETURN VALVE
35.204.BB	01	HYDRAULIC SYSTEM REMOTE COUPLERS
35.204.BE	01	REMOTE HYDRAULIC VALVE 4 STACK
35.204.BE	02	REMOTE HYDRAULIC VALVE 5 STACK
35.204.BE	03	REMOTE HYDRAULIC VALVE 6 STACK
35.204.BE	04	REMOTE HYDRAULIC CONTROL VALVE
35.204.BV	01	MANIFOLD VALVE ASSY
35.300.AB	01	POWERSHIFT - HYDRAULIC SYSTEM, OIL COOLER
35.300.AB	02	CVT - HYDRAULIC SYSTEM, OIL COOLER
35.310.AC	01	PLATE ASSY ASSY MOUNTING LEFT SIDE
35.310.AC	02	PLATE ASSEMBLY, VALVE MOUNTING, TOP
31.142.AF	01	FRONT PTO & FRONT HITCH READY - HYD
31.142.AF	02	FRONT PTO, FRONT HITCH HYD
31.142.AF	03	FRONT PTO & HITCH TRANSMISSION HYDR LINES
31.142.AF	04	FRONT PTO HYDRAULIC HOOD SUPPORT
31.142.AF	05	FRONT HITCH JUMPER
31.142.AF	06	OIL COOLER ASSY, FRONT PTO
31.142.AF	07	FRONT PTO OIL COOLER MOUNTING
31.142.AI		PTO, DIFFERENTIAL LOCK VALVE ASSY
31.146.AL		FRONT PTO, HEAT SHIELD
31.146.AR	01	FRONT PTO ENGINE GEARBOX & ARMS
31.146.AR	02	ENGINE GEARBOX ASSY
31.146.AR	03	FRONT PTO GEARBOX ASSY MOUNTING - EU
31.146.AR	03	FRONT PTO GEARBOX ASSY MOUNTING - NA
31.146.AR	04	FRONT PTO GEARBOX ASSY - EU
31.146.AR	04	FRONT PTO GEARBOX ASSY - NA
31.146.AR	05	FRONT PTO GEARBOX ASSY

TABLE OF CONTENTS

31.146.AS	01	FRONT PTO 3 POINT HITCH ASSY - EU
31.146.AS	01	FRONT PTO 3 POINT HITCH ASSY - NA
31.146.AS	02	FRONT PTO 3 POINT HITCH ASSY - EU
31.146.AS	02	HITCH, 3 POINT HITCH ASSY W/FPTO - NA
14.100.AR	01	PTO ASSY REDUCTION GEAR, DUAL SPEED
14.100.AR	02	PTO ASSY REDUCTION GEAR, DUAL SPEED
14.100.AR	03	POWER TAKE OFF ASSEMBLY, OUTPUT SHAFT, SINGLE SPEED
14.100.AU	01	POWER TAKE OFF ASSEMBLY, INPUT SHAFT
14.100.AU	02	POWER TAKE OFF ASSEMBLY, OUTPUT SHAFT, DUAL SPEED
90.100.AU	01	HOOD ASSY, FIXED
90.100.AU	02	HOOD ASSY, FIXED
90.100.AU	03	HOOD ASSY, TILTING
90.100.AU	04	HOOD, TILTING
90.100.AU	05	HOOD, TILTING
90.108.AA		DECALS CONTROLS
90.108.AB	01	DECALS MODEL AND BRAND
90.108.AB	02	DECALS MODEL AND BRAND
90.108.AC	01	DECALS WARNING
90.108.AC	02	DECALS WARNING
90.116.AC	01	FRONT FENDER ASSY - NARROW
90.116.AC	02	FRONT FENDER ASSY - WIDE
90.116.AC	03	FRONT FENDER ASSY - EXTRA WIDE
90.116.AC	04	REAR FENDER ASSY - NARROW
90.116.AC	05	REAR FENDER ASSY - WIDE
90.116.AC	06	REAR FENDER ASSY - EXTRA WIDE
90.118.AE		LADDER ASSY
90.118.AP		STEP, FRONT WINDOW
90.118.BM		MIRRORS
90.124.AC		SEAT SWITCH HARNESS & SUSPENSION HARNESS
90.124.AE		SEAT, AIR SUSPENSION, OPERATORS - STANDARD, DELUXE,
90.124.AH	01	SEAT CUSHION ASSY
90.124.AN	01	SEAT, AIR SUSPENSION ASSY - AIR 2000 - STANDARD
90.124.AN	02	SEAT, AIR SUSPENSION ASSY - SEMI-ACTIVE - DELUXE & LUXURY
90.124.AN	03	SEAT SUSPENSION COMPRESSOR SERVICE KIT
90.124.AN	04	SEAT, AIR SUSPENSION, KIT
90.150.AC		CAB FRAME

TABLE OF CONTENTS

90.150.AJ	01	ISO CAB MOUNTING
90.150.AJ	02	CAB SUSPENSION
90.150.AJ	03	CAB SUSPENSION
90.150.BG		CAB ROOF
90.151.AC	01	SEAT INSTRUCTIONAL - STANDARD
90.151.AC	02	SEAT INSTRUCTIONAL - LUXURY
90.151.AH		ARMREST, CONTROL UNIT, CUSHION, ASSY
90.151.AP		ARMREST, CONTROLS
90.154.AA	01	CAB DOOR INSTALLATION
90.154.AA	02	CAB DOOR ASSY
90.156.AB		CAB WINDOW - REAR
90.156.AL		CAB GLASS - FRONT, LEFT SIDE, RIGHT SIDE
90.160.AH		CAB EXTERIOR TRIM
90.160.AO		CAB, INSTRUMENT PANEL
90.160.AR		CAB FLOOR MATS
90.160.AX		CAB INTERIOR - HEADLINER, SUNSHADES, STORAGE
90.160.BI		CAB INTERIOR TRIM - POSTS
90.160.CD		CAB INTERIOR TRIM - CONSOLE
90.160.CK		CAB INSULATION
36.100.AI	01	HYDRAULIC SYSTEM BRAKES, WITH PNEUMATIC TRAILER BRAKE
36.100.AI	02	MASTER BRAKE WITH PNEUMATIC TRAILER BRAKE
27.100.AB	01	REAR AXLE, HOUSING
27.100.AB	02	REAR AXLE, HOUSING COVER
27.100.AB	04	REAR AXLE, HOUSING COVER HD & HD R/A - CVT
27.100.AB	05	REAR AXLE, HOUSING HD - CVT
27.100.AB	06	REAR AXLE, HOUSING - CVT
27.100.AK	01	REAR AXLE ASSY, 4 X 98 INCH, T8.275, T8.300, T8.330
27.100.AK	02	REAR AXLE ASSY, 4.5 X 98 INCH, T8.330, T8.360, T8.390
27.100.AK	03	REAR AXLE ASSY, 4 X 120 INCH, T8.275, T8.300, T8.330
27.100.AK	04	REAR AXLE ASSY, 4.5 X 120 INCH, T8.300, T8.330, T8.360, T8.390
27.100.AK	05	REAR AXLE ASSY 5 X 120 INCH, T8.420 - NA ONLY
27.100.AK	06	REAR AXLE ASSY 5 X 98 INCH, T8.420
27.106.AA	01	TRANSMISSION, PINION GEARS & SHAFT
27.106.AC	01	POWERSHIFT - TRANSMISSION, DIFFERENTIAL ASSY
27.106.AC	04	CVT - TRANSMISSION, DIFFERENTIAL HD - T8.390, T8.420
27.106.AC	06	CVT - TRANSMISSION, PINION GEARS & SHAFT - T8.360, T8.390

TABLE OF CONTENTS

27.106.AC	07	CVT - TRANSMISSION, PINION GEARS & SHAFT - T8.390, T8.420
27.120.AF	01	REAR AXLE, PLANETARY - T8.275, T8.300
27.120.AF	02	REAR AXLE, PLANETARY - T8.330, T8.360
27.120.AF	03	REAR AXLE, PLANETARY - T8.390
27.120.AF	04	HD REAR AXLE PLANETARY - T8.390, T8.420
41.200.AA	01	STEERING WHEEL
41.200.AB	01	STEERING COLUMN
41.200.AT	01	STEERING SYSTEM, MFD-T8.275,T8.300,T8.330,T8.360
41.200.AT	02	STEERING SYSTEM, MFD-T8.275,T8.300,T8.330,T8.360
41.200.AT	03	STEERING SYSTEM, CLASS 4.5 AXLE, STANDARD MFD-T8.275,T8.300
41.200.AT	04	STEERING SYSTEM, CLASS V AXLE, STANDARD & SUSPENDED,
41.200.AT	07	CVT - STEERING SYSTEM - SUSPENDED CNH AXLE CL 4.75
41.200.AT	08	CVT - STEERING SYSTEM - SUSPENDED CNH AXLE CL 5
41.200.AY	01	PRIORITY & REGULATOR VALVE ASSY - MAGNUM T8.275, T8.300,
41.200.AY	02	PRIORITY & REGULATOR PWM VALVE ASSEMBLY, T8.360, AND
41.200.AY	03	PRIORITY & REGULATOR PWM VALVE ASSEMBLY, T8.360 AND
41.206.AG	01	POWERSHIFT - EMERGENCY STEERING HYDRAULICS - HD
41.206.AG	02	CVT - EMERGENCY STEERING HYDRAULICS - STD & HD
41.216.AN	01	STEERING CYLINDER ASSY, CL 4.75
41.216.AN	02	STEERING CYLINDER ASSY, CL 5
41.216.AN	03	STEERING CYLINDER ASSEMBLY, CLASS 4.5 AXLE, BREAKDOWN-
41.216.AN	04	STEERING CYLINDER ASSEMBLY, MFD, 12 BOLT HUB-
41.432.AC	01	POWERSHIFT - STEERING SYSTEM, MFD WITH AUTOGUIDANCE
41.432.AC	02	CVT - STEERING SYSTEM WITH AUTOGUIDANCE
41.432.AE	01	PUMP/ VALVE ASSY - AUTOGUIDANCE
41.432.AE	02	VALVE ASSY - AUTOGUIDANCE - HIGH FLOW
21.105.AI	01	POWERSHIFT - TRANSMISSION LUBRICATION LINES
21.105.AI	02	POWERSHIFT - TRANSMISSION LUBRICATION LINES
21.105.AI	03	POWERSHIFT - TRANSMISSION LUBRICATION LINES - HD - T8.360,
21.105.AI	04	POWERSHIFT - TRANSMISSION LUBRICATION LINES - HD - T8.360,
21.113.AB	01	POWERSHIFT - RANGE TRANSMISSION HOUSING
21.113.AP	01	POWERSHIFT - SPEED TRANSMISSION HOUSING
21.113.AT	01	POWERSHIFT - SPEED TRANSMISSION, INPUT SHAFT WITHOUT
21.113.AT	02	POWERSHIFT - SPEED TRANSMISSION, INPUT SHAFT WITH
21.113.AT	03	POWERSHIFT - RANGE TRANSMISSION, INPUT SHAFT
21.135.AQ	01	POWERSHIFT - TRANSMISSION CONTROL LEVER ASSY

TABLE OF CONTENTS

21.135.AQ	02	POWERSHIFT - TRANSMISSION CONTROL VALVE LOCATION
21.135.AQ	03	POWERSHIFT - TRANSMISSION CONTROL VALVE COMPONENTS
21.135.AQ	04	POWERSHIFT - VALVE ASSEMBLY, TRANSMISSION CONTROL
21.135.AQ	05	POWERSHIFT - VALVE ASSEMBLY, TRANSMISSION CONTROL
21.135.AQ	06	POWERSHIFT - VALVE ASSEMBLY, TRANSMISSION CONTROL
21.135.AQ	07	POWERSHIFT - VALVE ASSEMBLY, TRANSMISSION CONTROL
21.135.AQ	08	POWERSHIFT - VALVE ASSEMBLY, INCHING
21.148.AC	01	POWERSHIFT - TRANSMISSION PINION, GEARS & SHAFT
21.155.AA	01	POWERSHIFT - RANGE TRANSMISSION - MFD CLUTCH AND
21.155.AA	02	POWERSHIFT - RANGE TRANSMISSION - MFD CLUTCH AND
21.155.AA	03	POWERSHIFT - RANGE TRANSMISSION - MFD CLUTCH AND
21.155.AA	04	POWERSHIFT - RANGE TRANSMISSION - MFD CLUTCH AND
21.155.AA	05	POWERSHIFT - RANGE TRANSMISSION - MFD CLUTCH AND
21.155.AA	06	POWERSHIFT - RANGE TRANSMISSION - MFD CLUTCH AND
21.155.AA	08	POWERSHIFT - RANGE TRANSMISSION - MFD CLUTCH AND
21.155.AI	01	POWERSHIFT - RANGE TRANSMISSION, MASTER CLUTCH
21.155.AN	01	POWERSHIFT - SPEED TRANSMISSION, COUNTERSHAFT WITHOUT
21.155.AN	02	POWERSHIFT - SPEED TRANSMISSION, COUNTERSHAFT WITH
21.155.AN	03	POWERSHIFT - SPEED TRANSMISSION, OUTPUT SHAFT FRONT
21.155.AN	04	POWERSHIFT - SPEED TRANSMISSION, OUTPUT SHAFT REAR
21.155.AN	05	POWERSHIFT - RANGE TRANSMISSION, COUNTERSHAFT
21.200.AA	01	POWERSHIFT - TRANSMISSION DROP BOX
21.200.AA	02	POWERSHIFT - TRANSMISSION DROP BOX
21.504.00		PICTORIAL INDEX - TRANSMISSION - CVT
21.504.AB	01	TRANSMISSION - CVT - FRONT COVER ASSY
21.504.AB	02	TRANSMISSION - CVT - FRONT COVER MOUNTING
21.504.AB	03	TRANSMISSION - CVT - TOP COVER ASSY.
21.504.AB	04	TRANSMISSION - CVT - HYDRO PUMP GEAR HOUSING ASSY.
21.504.AK	01	TRANSMISSION - CVT - MAIN HOUSING ASSY.
21.504.AK	02	TRANSMISSION - CVT - MAIN HOUSING ASSY
21.504.AM	01	TRANSMISSION - CVT - PLANETARY RING ASSY
21.504.AN	01	TRANSMISSION - CVT - FILLER/DIPSTICK ASSY
21.504.AP	01	TRANSMISSION - CVT - FRONT COVER ASSY.
21.504.AQ	01	TRANSMISSION - CVT - STANDARD FINAL DRIVE ADAPTER PLATE
21.505.AQ	01	TRANSMISSION - CVT - REGULATOR VALVE W/MANIFOLD
21.505.AQ	02	TRANSMISSION - CVT - REGULATOR VALVE

**Thanks very much for your reading,
Want to get more information,
Please click here, Then get the complete
manual**

JustClickHere 

NOTE:

**If there is no response to click on the link above,
please download the PDF document first, and then
click on it.**

**Have any questions please write to me:
admin@servicemanualperfect.com**